

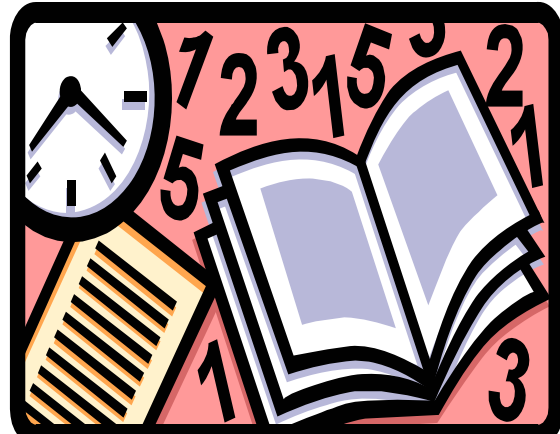
## TIME MANAGER - Time Management System

To be remained in the competition is just how well you manage your resources, of which the most important is the TIME.

Why TIME MANAGER? Do you want to compromise with legacy systems? We think, not as in today's fast moving environment the survival is based on just **Yes/No** .So one requires the shortest possible but a concise solution to the problem and that is what TIME MANAGER offers.

TIME MANAGER - Is a comprehensive, efficient and user friendly system to track, manage and generate detailed progress reports of the company's utilization of its most valuable resource, the **TIME**

TIME MANAGER is not just a simple time office system what make it above the competition is its availability and interface with most auto ID input devices including the highly advance ID system –



TMS is a state-of-the art system combining the Advance identification & Recognition hardware with software and is extremely useful in organizations where not only attendance but a high level of effective Security is required.

### **How Does Automated Timekeeping Work?**

Employees log the punches using any of the identification hardware device and TIME MANAGER posts each punch to the appropriate employee's' electronic timecard, and applies the company's employment policies to calculate the total worked hours. Employees can also review their personal hourly totals at the centrally located computer running the TIME MANAGER. At the end of each time cycle system produces a time report summary file and exports the file to the payroll system or service provider. All in a day's work when you let TIME MANAGER watch your clocks!

TIME MANAGER is a simple procedure, easy to learn and permits quick access to the employees time information. Employees hourly totals are readily viewable online, and missing and irregular punches are automatically noted. TIME MANAGER reduces the labor costs, saves time and provides much better control over payroll.



## **Key Board**

On line Transactions with PC  
Suitable for Small and Medium size organizations  
Optional door controller & Display available  
On Line Printer option & many more



## **Time Machine** (Barcode, Magnetic Strip Reader)

6 Hour UPS  
Dual Display  
In Steel Body  
6000 Transaction memory.  
Stand Alone and with on line PC  
Additional reader attachment  
Access Control and buzzer features  
On Line Printer option & many more



## **Card Reader** (Barcode, Magnetic Strip & Proximity Reader)

Hand Held or Slot Type hardware option  
On line Transactions with PC  
Suitable for Small and Medium size organizations  
Plastic or paper cards  
Optional door controller & Display available  
Optional 4 additional reader attachments  
On Line Printer option & many more  
Keyboard wedge and serial port model available.  
Different types of hardware option available



## **Biometric Finger Reader**

On line transaction  
High level of security  
No buddy punching  
Suitable for Small and Medium size organizations  
Suitable for One to One Authentication and one to many (1:N) authentication  
Optional door controller & Display available  
On Line Print option & many more



## **Biometric Finger Print Machine** (Bio Eagle)

Level 4 Security & Access Control  
Ethernet 10/100 Base-T-TCP/IP  
Remote configuration through Network  
Big storage memory (1000 users can be increased up to 2500)  
Fast identification time (less than a second with one to many Authentications)  
Huge transaction memory  
Suitable to medium and large organizations  
Standalone or network operation  
Ragged machine



## **TIME MANAGER**

- Eliminates Buying, Preparing & Calculating Employee Time Cards
- Complete System for Protecting Your Payroll Amount.
- Employees just to use card or hand to Punch In/ Punch Out, which provide not only the accuracy but also the security.
- Cost Effective as it's reduced number of employees at time office.
- Reduce a lot of time to calculate from conventional and slow method of Punch Card or attendance register.
- System helps to track the time of the employees.
- TIME MANAGER Helps to track hours worked and can categorize time into projects and jobs. It is the first step towards maintaining employee time keeping.



**Flexible Reports** - Almost 40 standard reports can be generated with TIME MANAGER including Hours worked Summary, Who's In/Who's Out, Employee Profiles, Early In/Early Out, Late Arrival and many more. TIME MANAGER Reports help the managers to review the employees' punching activity, work habits, Leave information, data for payroll information, and other data useful for the Human Resources Management. Some of them are as under.

- In/Out Time
- Late arrival
- Early Departure
- Off Day
- Absent
- On Leave (Casual/Annual)
- On Gazette Holyday
- Over Time/Double Time
- Hours Worked/Attended (Daily/Weekly/Monthly)
- Irregular/non valid card swiped
- Shift Reports (Daily/Weekly/Monthly Basis)
- Leave Management
- Other reports on client's option

**Open System Design** - TIME MANAGER is a Automated Time Office System, integrated seamlessly with most popular human resources management, payroll and manufacturing systems to provide the total workplace time and attendance solution.

**Available Versions –**

- TIME MANAGER Standard with Keyboard interface.
- TIME MANAGER Bio with Finger ID device.
- TIME MANAGER with Auto ID Scanners like Barcode Readers, Magnetic Strip Readers, Proximity Reading Devices and Wigand Input Devices.
- TIME MANAGER Bio with Biometric devices.

*\* All versions require Windows 9X, Windows NT, Windows2000 and Windows XP.*

